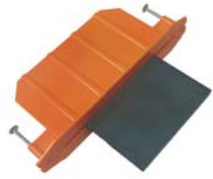


**PRODUCT DATA SHEET**  
**1/4" QuicPlate Flat Plate System**



QuicPlate System Info	Sleeve	Plate
Product Code	QP-025S	QP-025P
Size	1/4"	1/4"x4"x6"
Material Composition	ABS	A-36 Steel

**WHERE TO USE QUICPLATES**

QuicPlate System is used slab-on grade concrete structures to provide an effective load transfer system.

Based on spacing recommendation in conformance with ACI 360-10		
Slab Thickness	QuicPlate Dimensions	Spacing (Center to Center)
5"-6"	1/4" x 4" x 6"	18"

Note: Values are based on a maximum joint opening of 0.20"

**INSTALLATION**

**Preparation**

During progress of work all QuicPlates shall be protected from damage and should be free of oil, dirt and concrete spatter.

**Location & Placement of QuicPlate System**

1. Set up formwork.
2. Locate and mark with chalk line at specified location but usually at center of slab but at least 2 1/4" from top of slab.
3. Align QuicPlate Sleeve at specified location.
4. Use preset nails to attach QuicPlate Sleeve to formwork. See Figure A
5. Place all reinforcement needed.
6. Pour and finish concrete per ACI specification. Pour at least 18 inches from QuicPlate System. Figure B.
7. Maneuver the concrete around the QuicPlate System, vibrate & finish concrete.
8. After concrete cures, remove formwork with base & bend nails away from plate.
9. Place plate into sleeve. See Figure C.
10. Place all reinforcement needed.
11. Pour and finish concrete per ACI specification. Pour at least 18 inches from QuicPlate System.
12. Maneuver the concrete around the flat plate/rebar, vibrate & finish concrete. Figure D.



**INSTALLATION DETAILS**

Figure A:

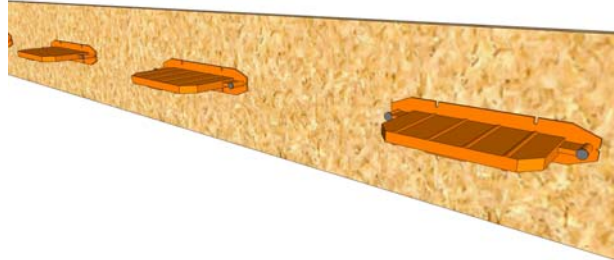


Figure B:

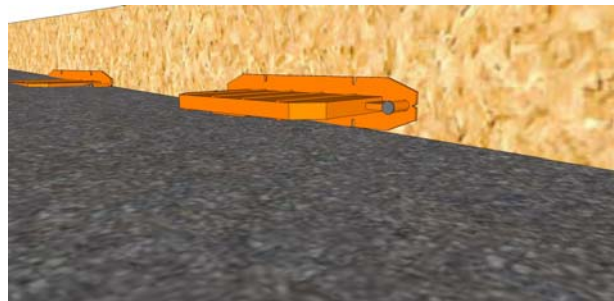


Figure C:

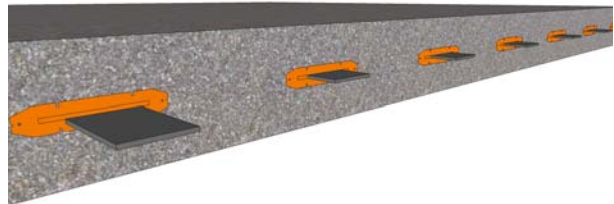
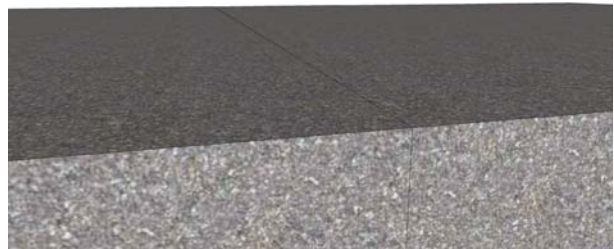


Figure D:



141 Hammond Street  
 Carrollton, GA 30117

Phone 770-832-2000 ■ 800-862-4835 ■ FAX 770-832-2095  
 Visit our website @ [www.bometals.com](http://www.bometals.com)  
 Address email to [info@bometals.com](mailto:info@bometals.com)

*Founded in 1989, BoMetals has become an industry leader in the design and manufacture of concrete and masonry accessories.*