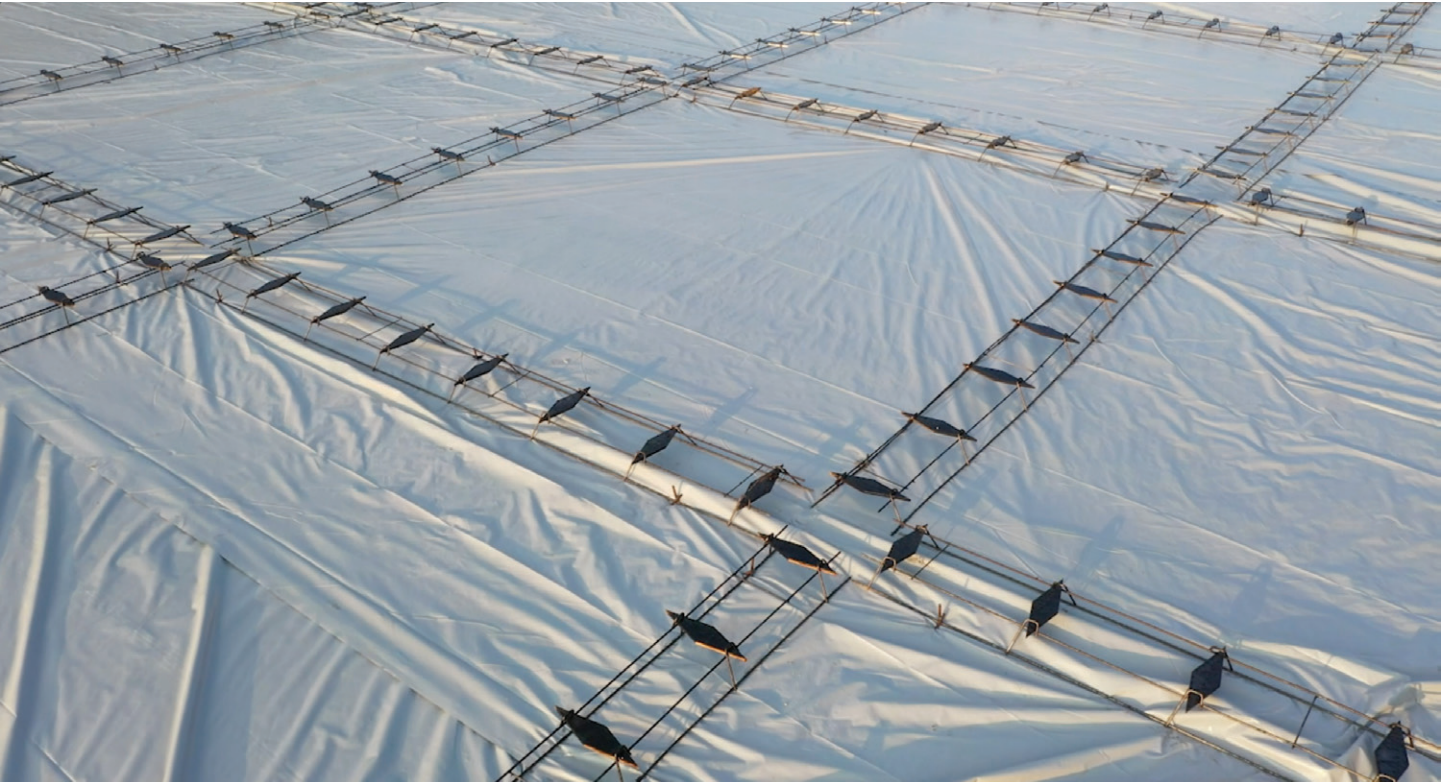


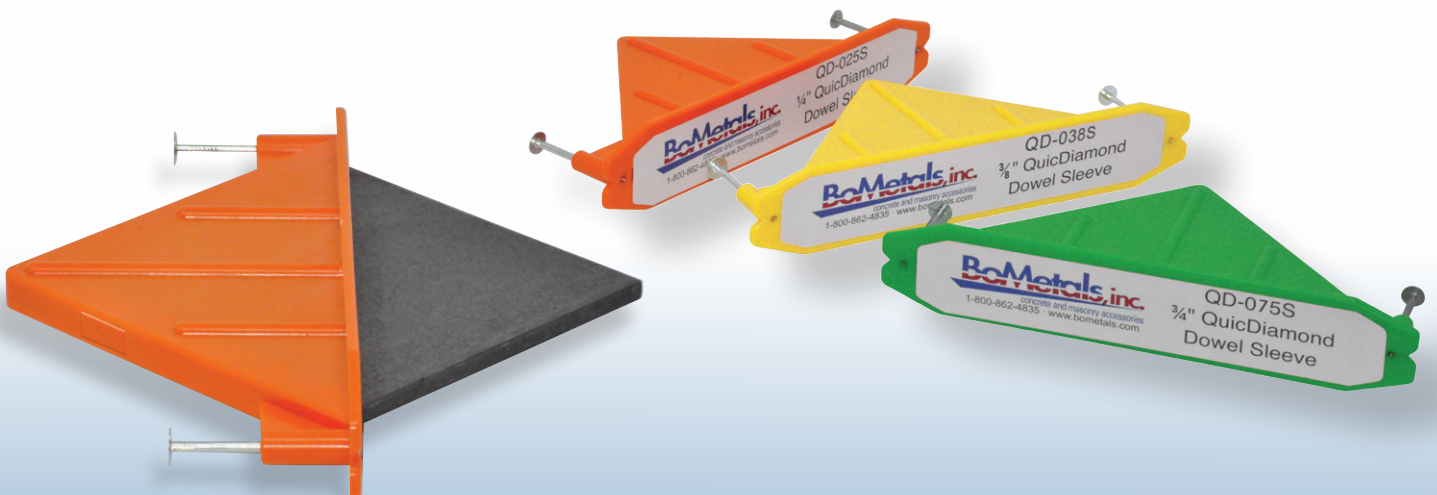
BoMetals, inc.®

concrete and masonry accessories

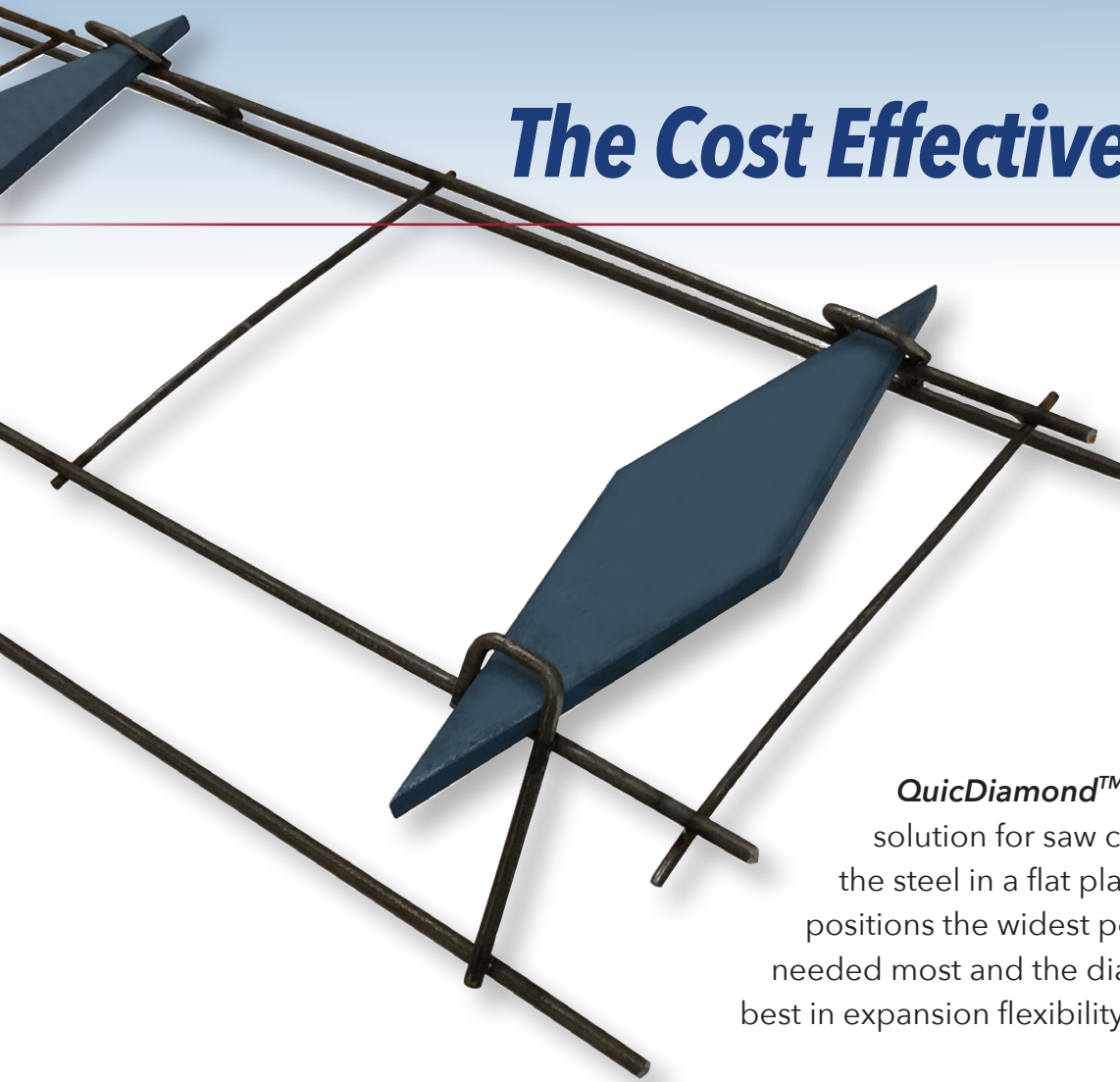
The QuicDiamond™ System – Value and Performance



QuicDiamond™ Baskets and QuicDiamond™ Sleeves & Plates Optimizing Steel in Concrete Joints



The Cost Effective Solution for



QuicDiamond™ Basket is the ideal solution for saw cut joints to optimize the steel in a flat plate. The diamond shape positions the widest portion of steel where it is needed most and the diamond shape offers the best in expansion flexibility.

QuicDiamond™ Baskets

- Provides stable dowel support and alignment with fully-welded basket assemblies
- Custom baskets available through our distribution network
- All steel is sawn according to industry guidelines ensuring smooth plate edges that will ensure free movement of dowel
- Doweling method in accordance with ACI 360 Design of Slab-on-Ground
- Design accommodates axial and lateral slab movements rapidly
- Engineered to provide optimal use of steel
- Doweling method in accordance to ACI360
- Factory-applied debonding agent on all dowel plates
- All plates are manufactured from steel certified to meet ASTM A36
- Cross-sectional area of steel at the outside edge of the saw-cut installation tolerance
- Construction Tolerance is 2" from center for all dowels
- Can be placed closer to the intersection of joints (6") to mitigate curl more effectively.



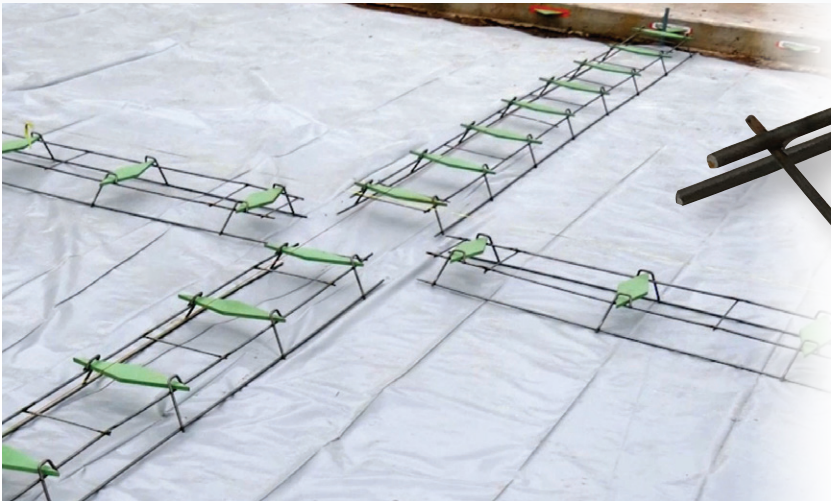
Slab on Grade – The QuicDiamond™ System



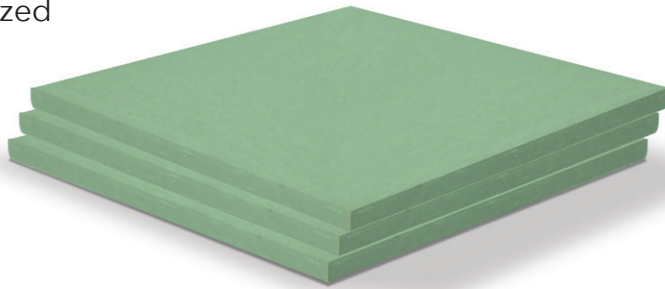
Our **QuicDiamond™ Dowel System** is the best solution for optimizing the steel in a flat plate dowel. The diamond shape positions the widest portion of steel where it is needed most and the diamond shape offers the best in expansion flexibility.

QuicDiamond™ Sleeves & Plates

- Provides excellent joint stability compared to other systems
- Provides reliable and maintenance-free concrete flatwork joints
- The plate shape is engineered for optimal material performance
- Plates are sawn steel for smooth square plate edges, allowing for unrestrained horizontal or lateral movement
- Consistently specified manufacturing tolerance
- Positive load transfer and continuity of surface profile
- Sleeves are manufactured from high-density ABS plastic
- Internal collapsible fins and spacers ensure load plate is installed in the correct position to preserve integrity of the sleeve
- Wide sleeve for increased lateral movement
- Plate shape allows for the most lateral and horizontal movement with maximum strength at the center of the joint
- Ribbed sleeves for increased rigidity
- Internal support stops sleeve compression during installs for sure and easy plate insertion



QuicDiamond™ Plates for sleeves and
QuicDiamond™ Baskets steel options:
Epoxy, Painted, Galvanized
and Stainless Steel



EPOXY

- Fusion Bonded Epoxy Powder Coating
- Protects steel from corrosion
- 8 mil epoxy coating

PAINTED

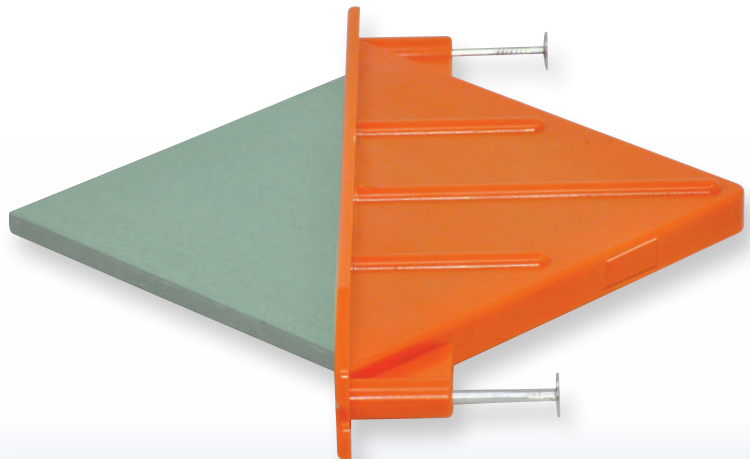
- Cost reducing corrosion protection with red oxide paint

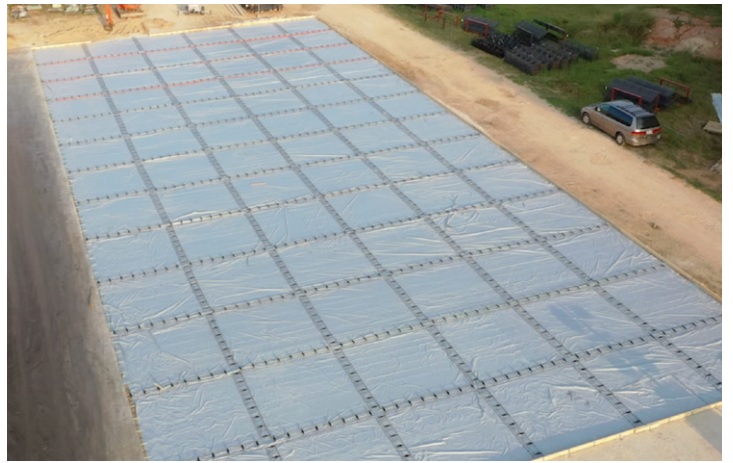
GALVANIZED

- Hot dipped galvanized steel meets ASTM A 123/A and ASTM A385

STAINLESS STEEL

- Grade 304 stainless steel certified to meet ASTM A240



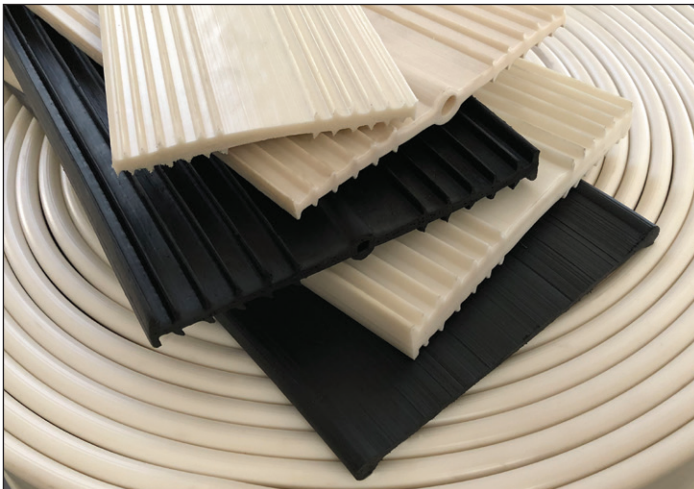




BoMetals introduces the QuicDiamond™ Baskets, the newest additions to our QuicDiamond™ dowel system line. Both come in multiple thicknesses for proper load transfer, no matter what the thickness of the slab.

Our round dowel system includes the QuicLoad™ and QuicDowel™ in multiple sizes. Every piece including our flat plates and smooth dowels arrive clearly marked for quick identification on the job site. When it comes to dowel systems no other manufacturer offers a more comprehensive line.

Since 1989 we have been committed to offering the best products available to the concrete construction industry. BoMetals offers a comprehensive line of Dowel Systems and leads the industry as the nation's top manufacturer of keyway joint systems. All of our products are available through our national network of distributors and warehouses.



PVC & TPER WATERSTOPS



KEYWAY JOINT SYSTEMS

