

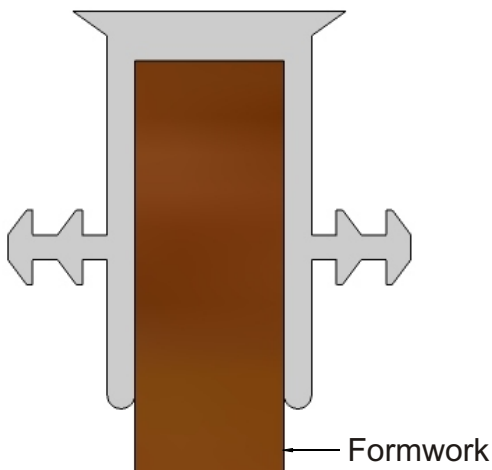
concrete and masonry accessories

B-SEAL

PAVING CAP SEAL

B-SEAL is one of the most advanced paving cap seal system in the industry. It uses specially formulated PVC to provide a durable sealing system for a maintenance free joint.

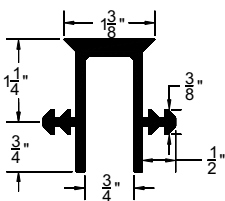
- Same continuous look throughout joint
- Can be used in the screeding process
- Protects against debris
- Also Available in TPER



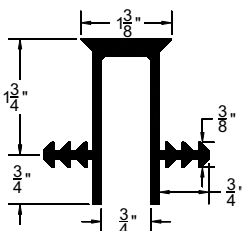
Typical Properties	Nominal Value	ASTM Method
Tensile Strength, psi	2500 min	D-412
Elongation, %	300 min	D-412
Hardness Shore A, ±3	85	D-2240
Oil Swell, Change in Volume/Weight ASTM#3 Oil, 70 hrs. @ 212°F	±10% by volume max. ±15% by weight max.	D-471
Abrasion Resistance 10,500 cycles, 1000 grams load	Material Loss - 0.4 gms. max.	D-3884
Ozone Resistance, 20% Strain 300 pphm, 70 hrs. @ 104°F	No Cracking	D-518
Results after Heat Aging 24 hrs. @ 70°C	Tensile Strength Retained: 90% min. Elongation Retained: 90% min Hardness Changed: 3%	D-573

IMPORTANT: The technical data herein is believed to be accurate. It is offered for your consideration, investigation and verification. Buyer assumes all risk of use, storage and handling of the product. NO WARRANTY, EXPRESS OR IMPLIED, IS MADE INCLUDING, BUT NOT LIMITED TO, IMPLIED WARRANTIES OR MECHANABILITY AND FITNESS FOR A PARTICULAR PURPOSE. Nothing contained herein shall be construed as a license to operate under or recommendation to infringe any patents.

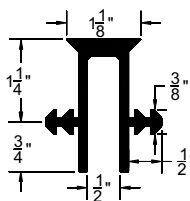
PC-075200



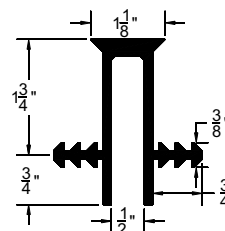
PC-075250



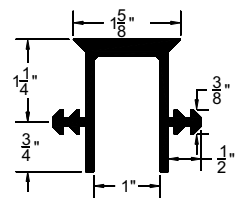
PC-050200



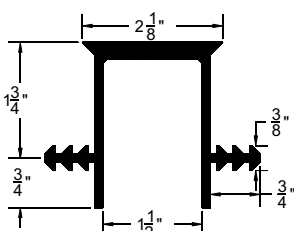
PC-050250



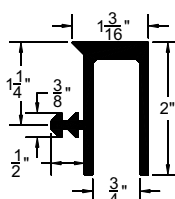
PC-100200



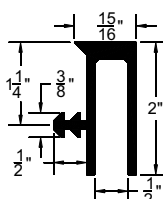
PC-150250



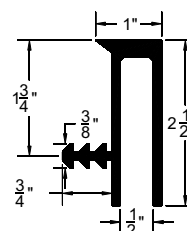
PCR-075200



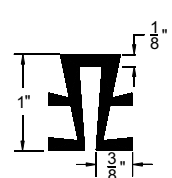
PCR-050200



PCR-050250



PC-063100

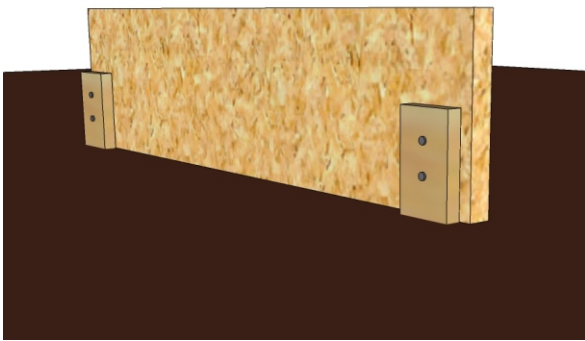


concrete and masonry accessories B-SEAL Installation Procedure

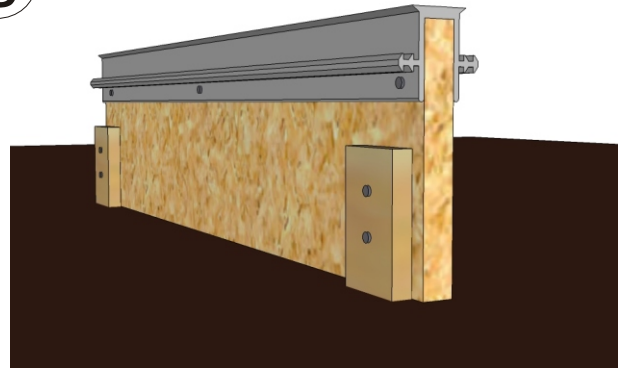
1. Set Formwork/Expansion Board and the top of it should be set 1/4 inch below the top of slab.
 2. Use stakes when necessary to make sure Formwork/Expansion Board is able to stay in place throughout installation procedure. Make sure there will be a 1/4 inch minimum clearance between bottom of B-SEAL & top of the stakes. See Figure A.
 3. Place B-SEAL on top of Formwork/Expansion Board. Make sure B-SEAL is completely against the Formwork/Expansion Board. See Figure B.
 4. Splice butt ends and factory fabrications using heating iron to weld ends together. Make sure ends are square.
 5. Every 18 inches use nails or staples on both sides to secure B-SEAL to the Formwork/Expansion Board below the embedment ribs. See Figure B.
 6. Place concrete and vibrate thoroughly to consolidate concrete around B-SEAL. See Figure C.
 7. Screed flush with top of B-SEAL. See Figure D.
- TOOLING NOT NECESSARY! DO NOT TOOL JOINT!**

Fabrications & Butt Splicing

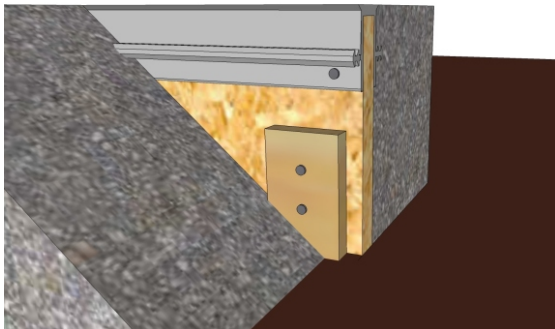
A



B



C



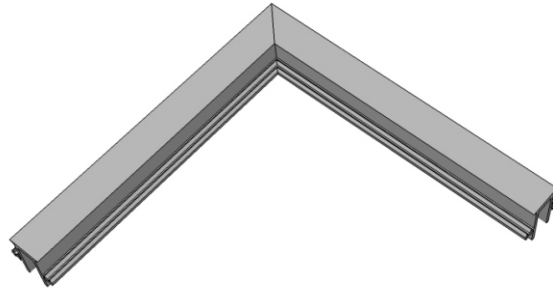
D



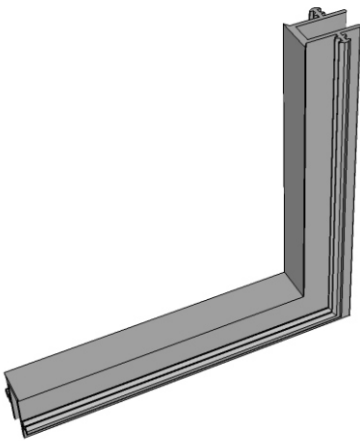
concrete and masonry accessories

TYPICAL B-SEAL FACTORY FITTINGS

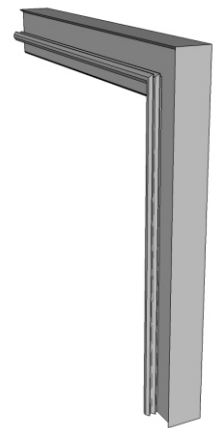
(CALL US FOR OTHER FITTING REQUESTS)



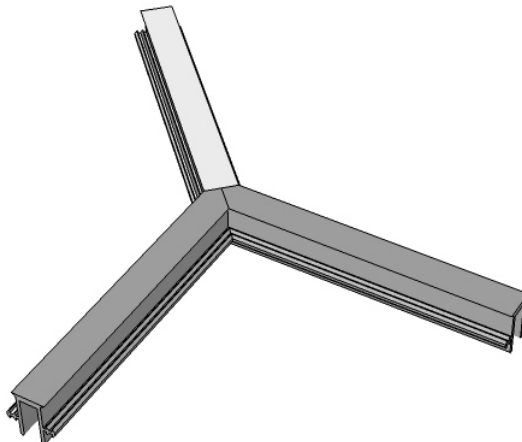
FLAT L



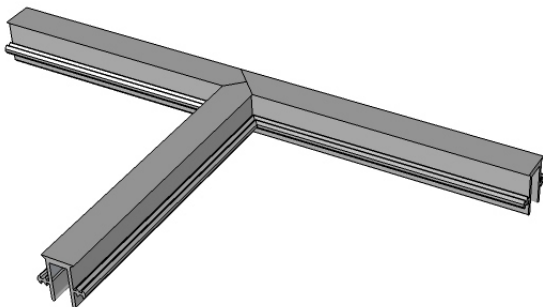
VERTICAL INSIDE L



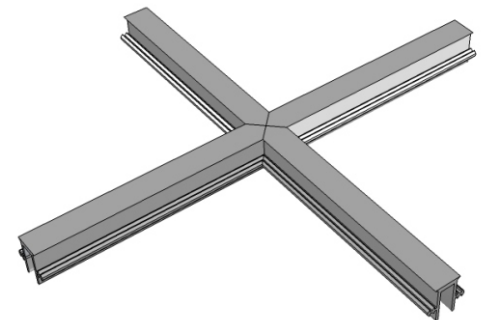
VERTICAL OUTSIDE L



FLAT Y



FLAT T



FLAT X