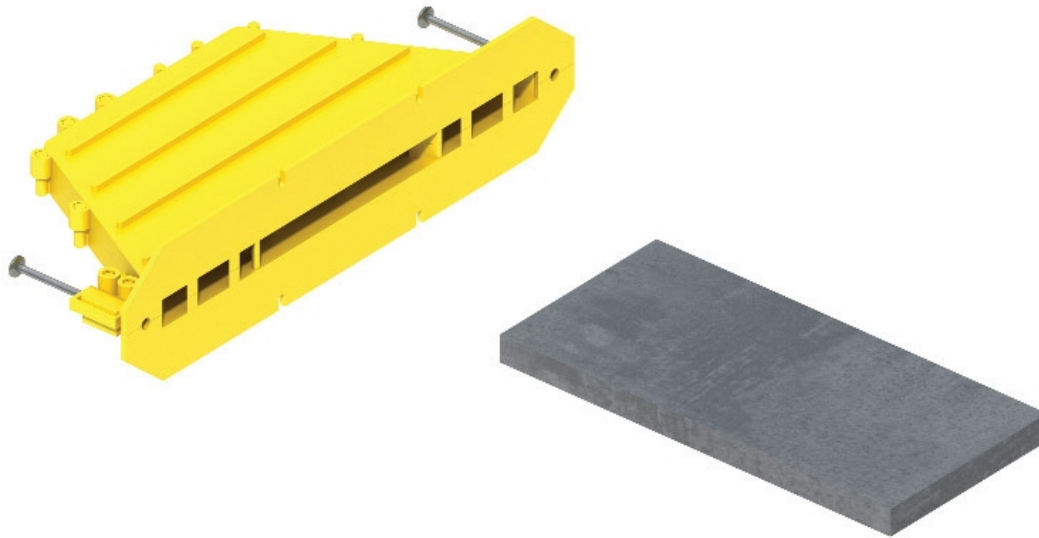




Dominator Plate Dowel

Most Advanced Design in Doweling Systems



❖ Dominator Plate

- A consistent cross-sectional area provides increased capacity at wider joints openings
- Instead of a wider plate, a thicker plate allows a more economical use of steel to provide increased bending capacity
- Bearing Stress between steel and concrete is reduced when compared to conventional dowels
- Engineered for optimal performance by LESA Systems



❖ Dominator Sleeve

- Durable Hi Impact Styrene Plastic
- Tapered Sleeve for increased lateral movement to prohibit lateral restraint
- Ribs on the sleeve provide anchorage in concrete and increase the rigidity of the sleeve
- Internal Supports prevent the sleeve compressing during installation allowing easy and accurate insertion of the steel plate.

❖ Installation

- Eliminates drilling forms and greasing dowels
- Don't have to worry about misaligned dowels resulting in slab lockup which can cause cracking
- Reduce labor cost when compared to conventional dowels
- Preset nails for quick and easy installation
- Improved job site access with shorter dowels and bright yellow sleeves
- Less Hazards = Less On-Site Accidents = Faster Installation Time = Less Labor Cost



Based on spacing recommendations in conformance with ACI 360R-10

Slab Depth	Dominator Dowel Dimensions	Spacing
5"-6"	3/8" x 3" x 6" (10mm x 75mm x 150mm)	18"
7"-8"	3/8" x 3" x 6" (10mm x 75mm x 150mm)	18"
9"-11"	3/8" x 3" x 6" (10mm x 75mm x 150mm)	18"

Note: Information above is based on a maximum joint opening of 0.20"

For any design and spacing review, product information, consult a BoMetals Engineer or Technical Sales Representative.

